



ART. 20700020 - CLASSIC INOX

**CLASSIC INOX DOUBLE CEREAL DISPENSER (2 X 3L)****CEREAL DISPENSER**

TRITAN™



38 x 20 x H 60 cm



2 x 3 L



12 kg



50x47xH32cm

✓ Safe and stable structure for two different types of cereal

✓ Functional knobs for easy portioning

✓ Easy assemble and disassemble

## AVAILABLE COLORS



stainless steel

## DESCRIPTION

Mirror polished 18/10 stainless steel structure, base, drip tray, stand, lid and chromed steel rods .3 liter tubes and monobloc cones manufactures by mold injections with "TRITAN" without glue, bisphenol A free. Rubber fans . Functional knobs for easy portioning. Food certified tubes, cones and fans. Maximum height of cups 9 cm.

## MATERIALS

Plastic TRITAN (foodsafety certified), resistant to 25% of alcohol , Plastic PMMA , Mirror-polished stainless steel 18/10 , Chromed steel



## CLEANING INSTRUCTIONS

### Plastik, PMMA, TRITAN

It is recommended to hand wash with neutral detergent and to dry it immediately.

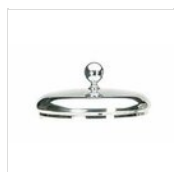
### Mirror polished stainless steel

It is recommended to hand wash with a neutral detergent.

### PE, porcelain, glass, satinated stainless steel, chromed steel and brass

All removable components can be washed in the dishwasher. If it is not removable, we recommend hand washing it with neutral detergent.

## SPARE PARTS



**Round stainless steel lid for classic cereal dispenser (3L) with handle**  
COPERCHIO  
12



**Round cereal container (3L)**  
MULINO  
PACK 3L



**Stainless steel drip plate Ø 14 cm**  
PIATTINO 14

For manufacturing necessities, the mentioned specifications are not binding and could be changed without prior notice. Sales conditions are available upon request. Being wood a natural product, the shown colors are only indicative. Possible color and grain differences in comparison with samples and previous shipments are not reasons for claim. All parts and materials with direct food contact have been tested and approved for food contact according to the rules established by law. All rights reserved - ©Ze Pé.

